



PASSWORD

JOURNAL®



Model G73007

For 1 player / Ages 8 and up

INSTRUCTION MANUAL

P/N 82373400 Rev.A

Got a secret? Keep it safe with Password Journal! The door stays locked until you say your private password, then locks automatically when you close it. An intruder alarm lets you know how many people have tried to sneak a peek without your permission. There's even a light for writing in the dark and a secret compartment for your personal stuff!

GETTING STARTED

BATTERY INSTALLATION

Adult supervision is recommended when installing batteries.

Password Journal will open automatically when the batteries are installed.

- Using a screwdriver, loosen the screw until the battery compartment door can be removed.
- Insert three (3) AA batteries (we recommend alkaline) as indicated inside the battery compartment.
- Replace the battery compartment door and tighten the screw with a screwdriver. Do not over-tighten.



Reset Button

NOTE: You will have 20 seconds to replace the old batteries before your password and set-up information is lost. Should you lose your password or set-up information, you will need to re-enter them.

CAUTION

- As with all small batteries, the batteries used with this game should be kept away from small children who might still put things in their mouths. If a battery is swallowed, consult a physician immediately.
- Be sure you insert the battery correctly and always follow the game and battery manufacturer's instructions.
- Do not dispose of batteries in fire.
- Batteries might leak if improperly installed, or explode if recharged, disassembled or heated.



Security

Slide this switch between "High" or "Low" security to control how precisely your Password Journal recognizes your voice. We suggest using the "Low" setting until you are familiar with the sensitivity of your Password Journal.

SET UP

1. RECORDING YOUR PASSWORD

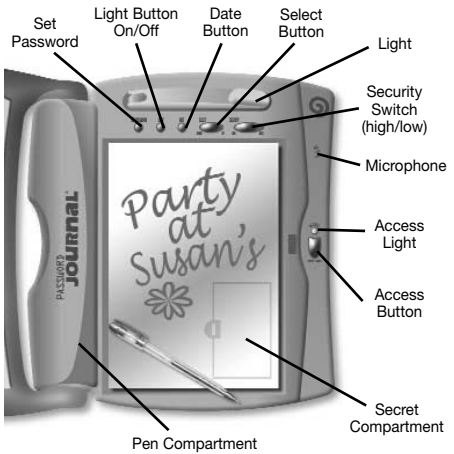
After installing the batteries, you will be prompted to "Record your Password". Wait for the green "Access" light to turn ON, then say your chosen password in the microphone (MIC). Your password can be any word such as cat, dog or popcorn.

NOTE: If you do not wait until the green light is on, Password Journal will not "hear" your password and will prompt you to speak again: "Error...please begin again."

Password Journal will prompt you to repeat your new password again: "Repeat your password." If you have spoken your password correctly, your new password will be accepted: "Password Accepted."

NOTE: Be sure to speak clearly and say your password the EXACT same way each time! When recording your password, make sure you are in a quiet place.

You may want to write down your password in case you forget it—but be sure to write it in a safe place or it won't be a secret anymore!



2. SETTING THE HOUR

Once you have recorded your password, you'll need to set the correct hour, month, date and your birthday.

Press the "Date" button. You will be prompted for "Hour, Please". Press the "Select" button to scroll through the hours. To move ahead one hour, press the Up Arrow of "Select" button. To move back one hour, press the Down Arrow of "Select" button. Continue to press the "Select" button until you hear the correct hour. When you reach the correct hour, press the "Date" button.

3. SETTING THE DATE

Next, Password Journal 3 will ask you to enter the current month. You will be prompted for "Month, Please." Use the "Select" button to scroll through the months. When you reach the correct month, press the "Date" button. You will be prompted for "Day, Please". Use the "Select" button to scroll through the days. When you reach the correct day, press the "Date" button.

4. SETTING YOUR BIRTHDAY

You will be prompted for "Your Birthday Please, Month". Use the "Select" button to scroll through the months. When you reach the correct Month, press the "Date" button. You will be prompted for "Day". Use the "Select" button to scroll through the days. When you reach the correct day, press the "Date" button.

Password Journal will wish you a happy birthday on your special day.

If you want to change the birthday date, press and hold the "Date" button to reset.

NOTE: You must complete the set-up or wait one minute before accessing your Password Journal.

5. TURNING ON THE LIGHT

Locate the Light button inside Password Journal. Press the "Light" button to turn the light on or off. If door is closed while light is still on, the light will automatically turn off.

OPENING YOUR PASSWORD JOURNAL

Press and hold the "Access" button. You will be prompted with "Your password, please." Wait for the green "Access" light and then say your chosen password clearly into the microphone (MIC). Continue following the voice prompts until your Password Journal opens automatically. Each time you open your Password Journal you will be told if you have had any attempted intruders and how many.

NOTE: If you have spoken the wrong password, Password Journal will give you a chance to correct yourself. You will be prompted with "Please begin again, repeat your password." Wait for the green access light and then speak your chosen password clearly into the microphone (MIC). If you say the wrong password again, Password Journal will sound the intruder alarm: "Access denied."

CHANGING YOUR PASSWORD

From time to time, you may want to change your password (especially if you think someone else knows it!) Just remember to write down your new password and keep it in a safe place.

Open Password Journal using your old password. Press and hold the "Set Password" button. You will be prompted to "Record your password." Wait for the green "Access" light to turn on, then say your chosen password in the microphone (MIC).

NOTE: If you do not wait until the green light is on, Password Journal will not "hear" your password and will prompt you to speak again: "Error...please begin again."

Password Journal will prompt you to repeat your new password again: "Repeat your password." If you have spoken your new password correctly, your new password will be accepted: "Password accepted."

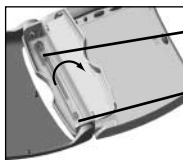
RESETTING PASSWORD JOURNAL

Press the "Reset" button to open your Password Journal. Insert a dull, pointed object (like the end of a paper clip) into the Reset "button hole."

Password Journal will open and you can then reset your password.

DESIGN YOUR OWN COVER

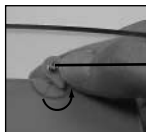
Create your own cover with the cool gel pen included! Add stickers, pictures or create your own artwork. Open your Password Journal with your password. Move both swivel locks and remove the inside plastic cover.



Gel Pen

Pen Compartment/Storage

Stores your gel pen! Or it is perfect for keeping small items such as coins and notes. Pinch the finger recess button and pull upward to open.



Swivel Lock

MAINTENANCE

- Handle this product carefully.
- Store this product away from dusty or dirty areas.
- Keep this product away from moisture or extreme temperature.
- Do not disassemble this product. If a problem occurs, press the Reset button, or remove and replace the batteries to reset the product, or try new batteries. If problems persist, consult the warranty information located at the end of this instruction manual.
- Use only the recommended battery type.
- Do not mix old and new batteries.
- Do not mix alkaline, standard (carbon-zinc) or rechargeable (nickel-cadmium) batteries.
- Do not use rechargeable batteries.

- Do not attempt to recharge non-rechargeable batteries.
- Remove any exhausted batteries from the product.
- Do not short-circuit the supply terminals.
- Insert batteries with the correct polarity.

Please retain this for future reference.

This device complies with Part 15 of the FCC Rules. Operation is subject to the following two conditions: (1) this device may not cause harmful interference and (2) this device must accept any interference received, including interference that may cause undesired operation.

WARNING: Changes or modifications to this unit not expressly approved by the party responsible for compliance could void the user's authority to operate the equipment.

NOTE: This equipment has been tested and found to comply with the limits for a Class B digital device, pursuant to Part 15 of the FCC Rules. These limits are designed to provide reasonable protection against harmful interference in a residential installation. This equipment generates, uses and can radiate radio frequency energy and if not installed and used in accordance with the instructions, may cause harmful interference to radio communications. However, there is no guarantee that interference will not occur in a particular installation. If this equipment does cause harmful interference to radio or television reception, which can be determined by turning the equipment off and on, the user is encouraged to try to correct the interference by one or more of the following measures:

- Reorient or relocate the receiving antenna.
- Increase the separation between the equipment and receiver.
- Connect the equipment into an outlet on a circuit different from that to which the receiver is connected.
- Consult the dealer or an experienced radio TV technician for help.

90-DAY LIMITED WARRANTY

(This product warranty is valid in the United States and Canada only)

Radica Games Ltd. warrants this product for a period of 90 days from the original purchase date under normal use against defective workmanship and materials (batteries excluded). This warranty does not cover damage resulting from accident, unreasonable use, negligence, improper service or other causes not arising out of defects in material or workmanship. Radica Games Ltd. will not be liable for any costs incurred due to loss of use of this product or other incidental or consequential costs, expenses or damages incurred by the purchaser. Some states do not allow the exclusion or limitation of incidental or consequential damages, so the above limitations may not apply to you. This warranty gives you specific legal rights and you may also have other legal rights, which vary from state to state.

During this 90-day warranty period, the game will either be repaired or replaced (at our option) without charge to the purchaser when returned prepaid with proof of date of purchase to: **Radica USA, Ltd., 13628-A Beta Road, Dallas, Texas 75244, USA.** Please remove the batteries and wrap the unit carefully before shipping. Please include a brief description of the problem along with your return address and mail it postage prepaid.

Products returned after the 90-day period has expired will be repaired or replaced (at our option) for a service charge of US \$10.00. Payment must be made by check or money order. This

extended service will only be available for one year from the date of purchase.

IMPORTANT: Before returning the unit for repair, test it with fresh alkaline batteries. Even new batteries may be defective or weak and low battery power is a frequent cause of unsatisfactory operation.



RADICA:®
GIRL TECH®
PASSWORD JOURNAL IS A REGISTERED
TRADEMARK OF RADICA GAMES LTD.
© 2001 RADICA GAMES LTD.
PRODUCT SHAPE™
ALL RIGHTS RESERVED

